

Real-time Noise Data RTN1 (Food and Environmental Hygiene Department Depot)

Table with 12 columns of time-stamped noise data. The first column lists timestamps from 29/4/19 5:41 to 30/4/19 6:41. The subsequent columns list values for various RTN1 parameters at those times, ranging from 55 to 66. The table is organized into four columns of six rows each.

Real-time Noise Data RTN1 (Food and Environmental Hygiene Department Depot)

26/5/19 23:41	62
26/5/19 23:46	62
26/5/19 23:51	61
26/5/19 23:56	61

Real-time Noise Data RTN2a (Hong Kong Electric Centre)

Table with 4 columns: Time (HH:MM), Noise Level (dB), Date (YYYY/MM/DD), and Noise Level (dB). The data spans from 13/5/19 11:56 to 13/5/19 20:56 and includes multiple rows for each minute.

Real-time Noise Data RTN2a (Hong Kong Electric Centre)

26/5/19 23:41	57
26/5/19 23:46	57
26/5/19 23:51	58
26/5/19 23:56	56

Real-time Noise Data RTN3 (Po Leung Kuk Yu Lee Mo Fan Memorial School)

Normal Day 07:00-19:00

Table with 2 columns: Time (e.g., 27/4/19 7:01) and Value (e.g., 56). Rows range from 27/4/19 7:01 to 3/5/19 12:01.

Table with 2 columns: Time (e.g., 3/5/19 12:31) and Value (e.g., 66). Rows range from 3/5/19 12:31 to 8/5/19 18:31.

Table with 2 columns: Time (e.g., 9/5/19 7:01) and Value (e.g., 66). Rows range from 9/5/19 7:01 to 15/5/19 13:01.

Table with 2 columns: Time (e.g., 15/5/19 13:31) and Value (e.g., 62). Rows range from 15/5/19 13:31 to 21/5/19 14:01.

Table with 2 columns: Time (e.g., 21/5/19 8:01) and Value (e.g., 67). Rows range from 21/5/19 8:01 to 28/4/19 10:51.

Normal Day 19:00-23:00 Sunday & Holiday 07:00-23:00

Table with 2 columns: Time (e.g., 27/4/19 19:01) and Value (e.g., 69). Rows range from 27/4/19 19:01 to 28/4/19 10:51.

Real-time Noise Data RTN3 (Po Leung Kuk Yu Lee Mo Fan Memorial School)

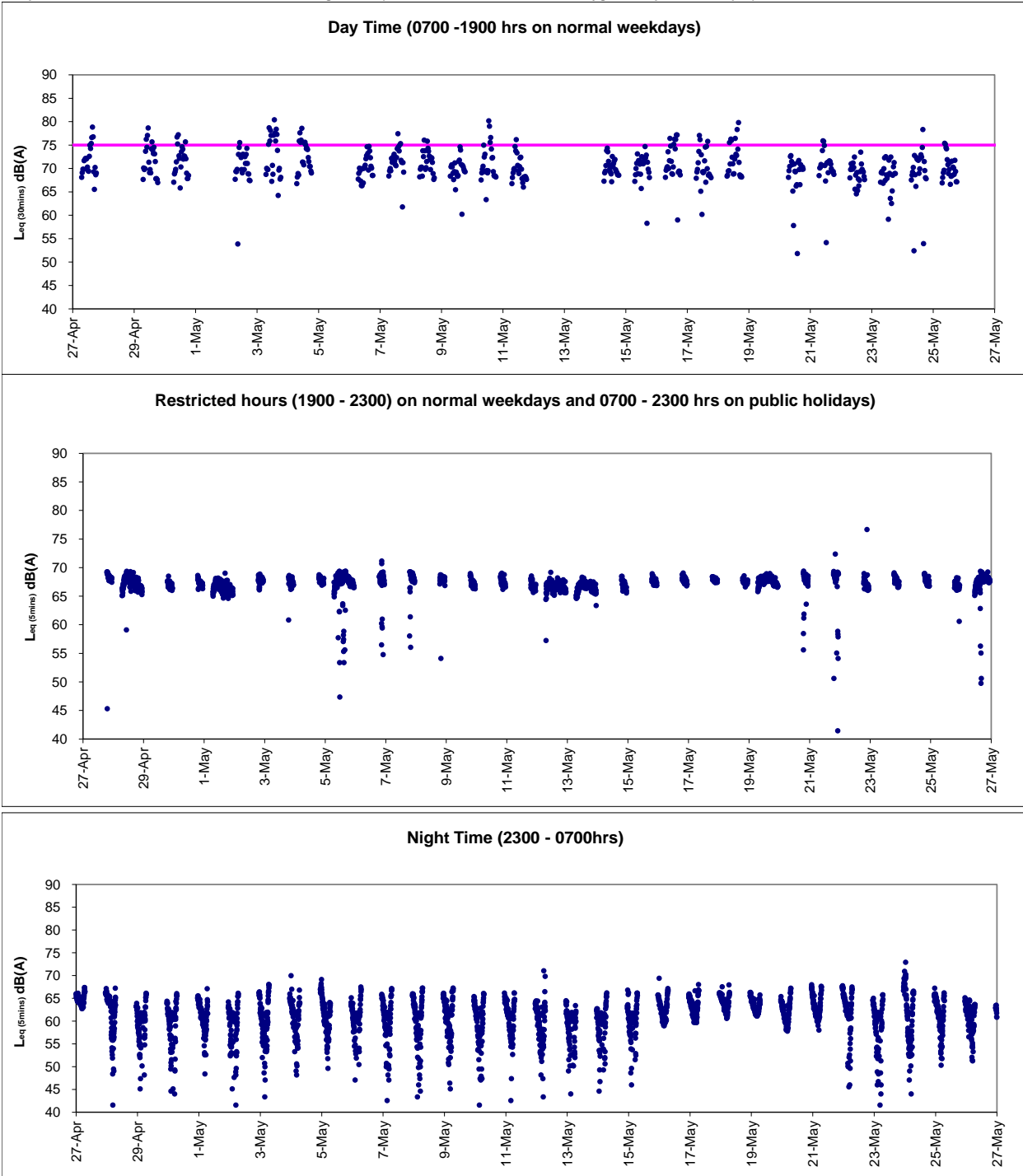
26/5/19 23:41	66
26/5/19 23:46	67
26/5/19 23:51	66
26/5/19 23:56	69

Real-time Noise Data RTN4 (Causeway Bay Community Centre)

26/5/19 23:41	58
26/5/19 23:46	58
26/5/19 23:51	58
26/5/19 23:56	57

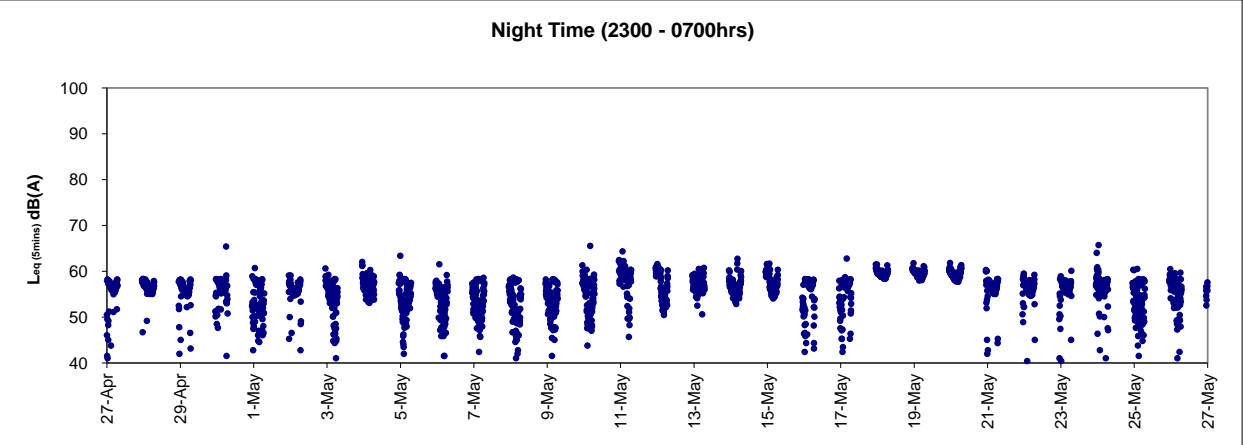
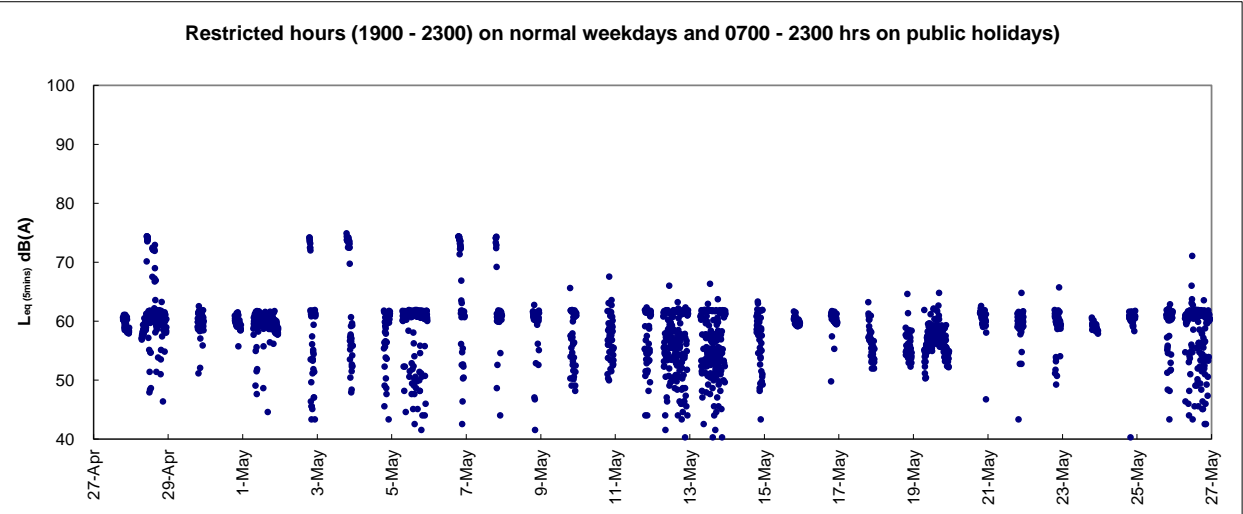
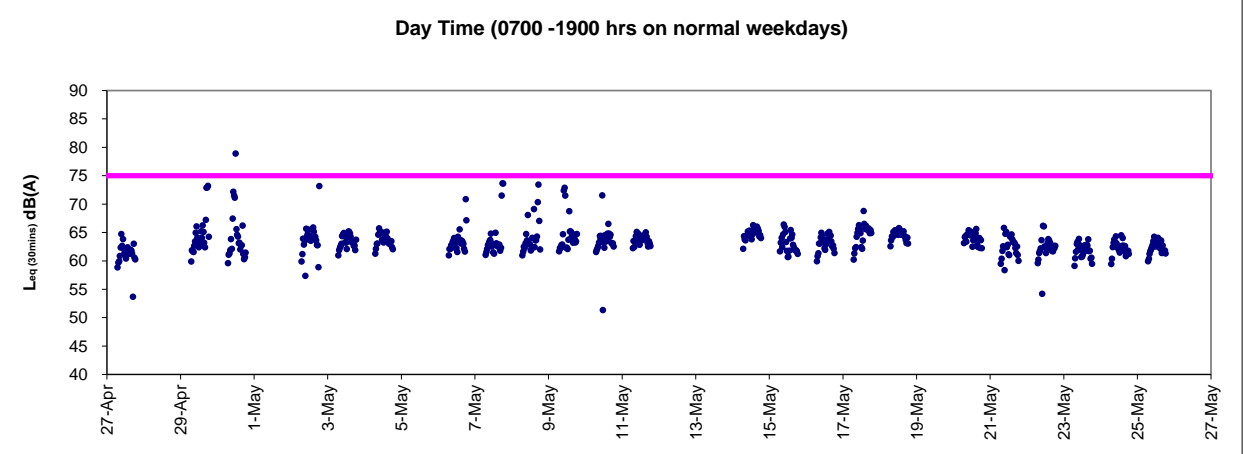


Graphic Presentation of Real Time Noise Monitoring Result (RTN1-Food and Environmental Hygiene Department Depot)



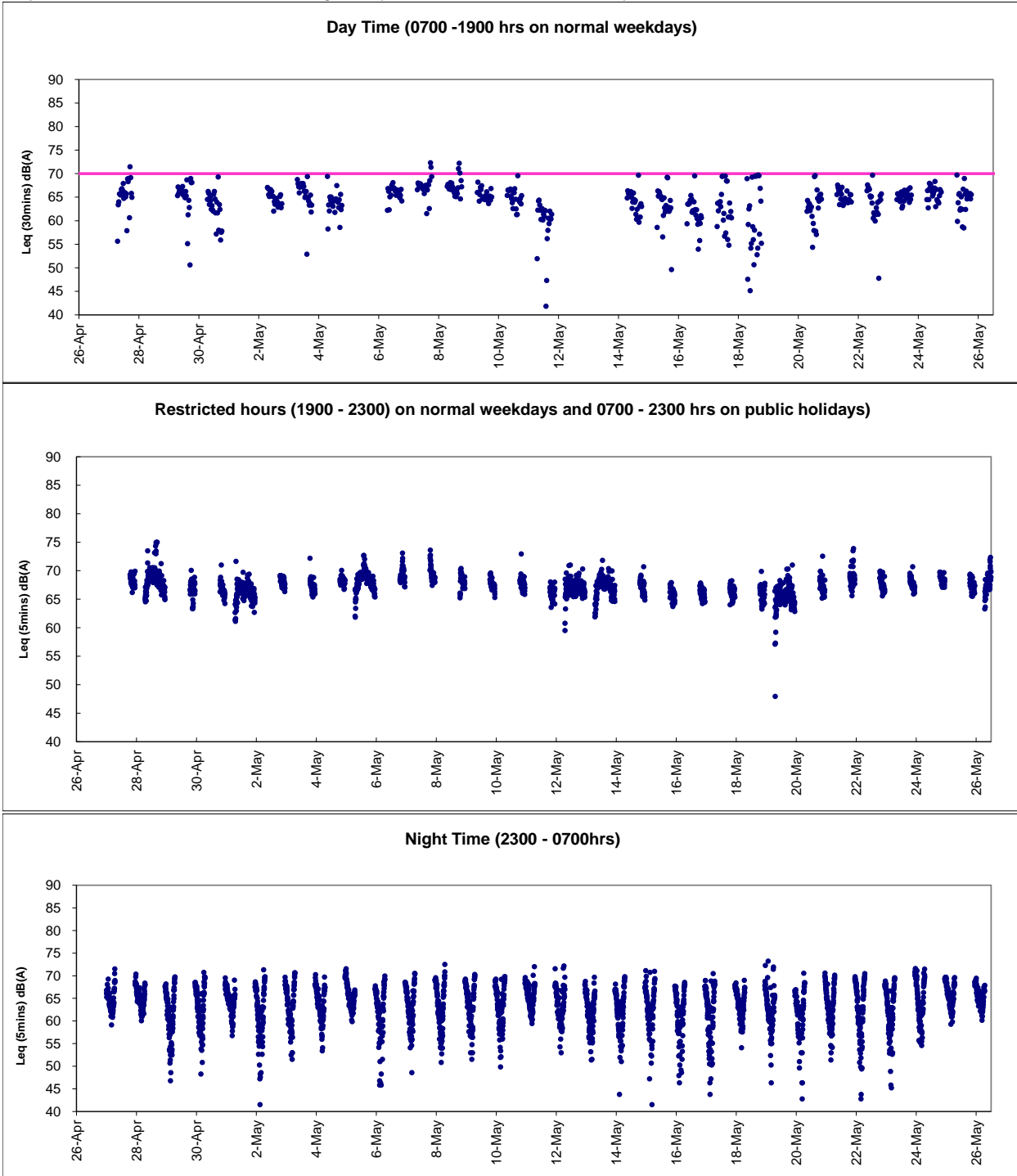


Graphic Presentation of Real Time Noise Monitoring Result (RTN2a- Hong Kong Electric Centre)





Graphic Presentation of Real Time Noise Monitoring Result (RTN3-Yu Lee Mo Fan Memorial School)





Graphic Presentation of Real Time Noise Monitoring Result (RTN4-Causeway Bay Community Centre)

